

Plan anvil M4TP01



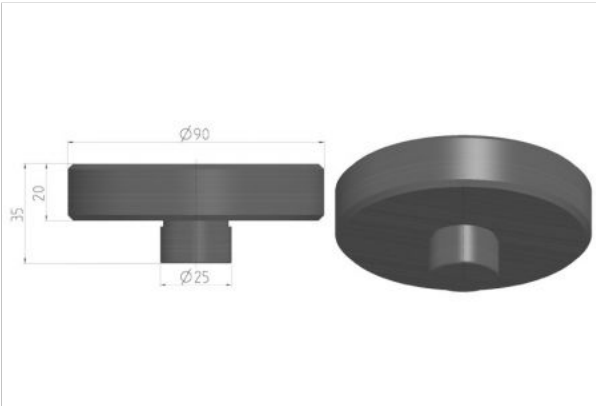
Plane anvil
bearing area 10 mm dia.

Plan anvil M4TP02



Plane anvil
bearing area 22 mm dia.

Plane anvil M4TP03



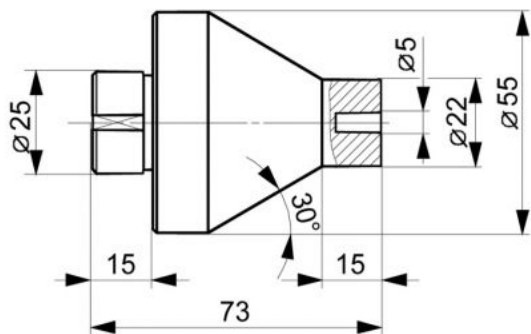
Plane anvil
supporting area: \varnothing 90 mm

Plane anvil M4TPA1



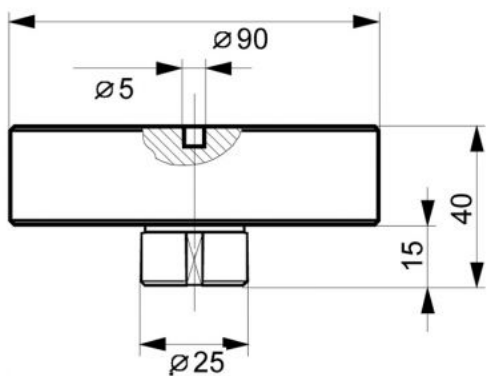
Plane anvil
supporting area: \varnothing 10 mm
with PKD-diamond-inset \varnothing 5 mm

Plane anvil M4TPA2



Plane anvil 22
with PKD-inset 5 mm

Plane anvil M4TPA3



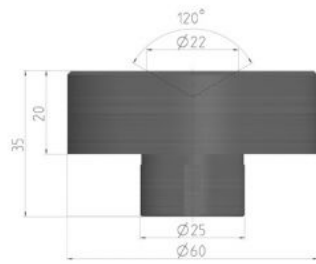
Plane anvil 90
with PKD-inset 5 mm

Plan anvil M4TP05

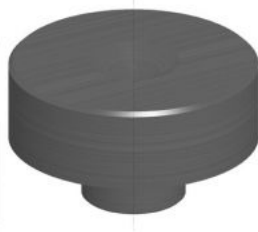


Plane anvil
bearing area 235 mm dia.

Ball testing anvil M4TK01



Ball testing anvil
for ball work pieces Ø 10 - 40 mm



Ball testing anvil M4TK02

Ball testing anvil
for ball work pieces 20 - 100 mm

Ball testing anvil M4TK03

Ball testing anvil
for ball work pieces 4 - 10 mm

V-Anvil M4TV01



V-Anvil
for work pieces Ø 4 - 10 mm

V-Anvil M4TV02



V-Anvil
for work pieces \varnothing 8 - 20 mm

V-Anvil M4TV03



V-Anvil
for work pieces \varnothing 15 - 55 mm

V-Anvil M4TV04



V-Anvil
for work pieces \varnothing 30 - 220 mm

V-Anvil M4TV11



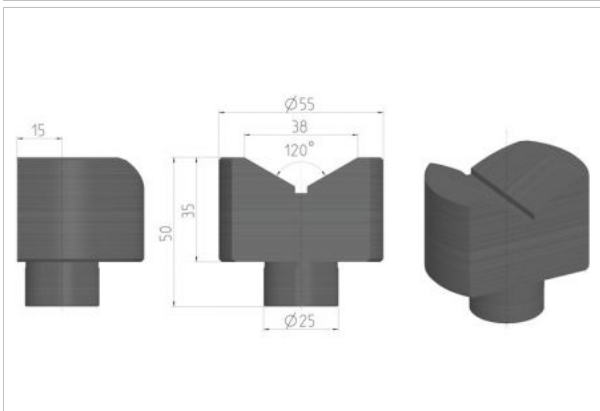
V-Anvil set one-sided
for work pieces \varnothing 4 - 10 mm

V-Anvil M4TV12



V-Anvil set one-sided
for work pieces \varnothing 8 - 20 mm

V-Anvil M4TV13



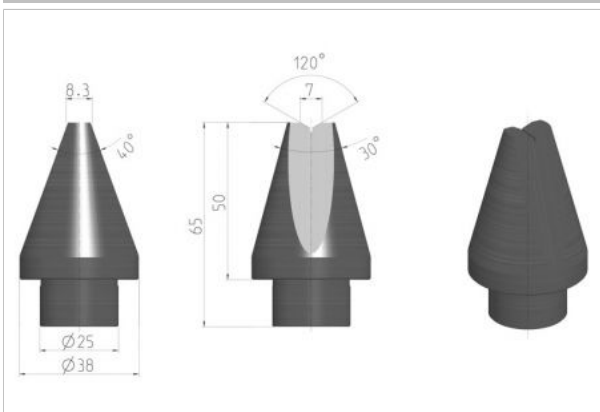
V-Anvil set one-sided
for work pieces \varnothing 15 - 55 mm

V-Anvil M4TV14



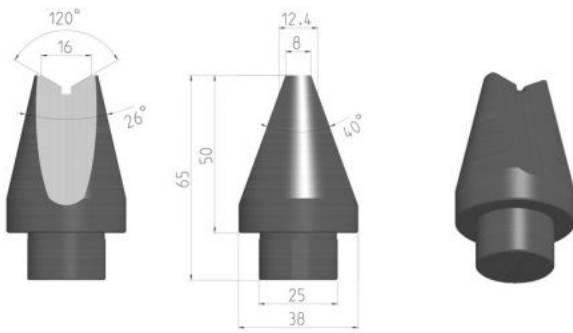
V-Anvil set one-sided
for work pieces \varnothing 30 - 220 mm

V-Anvil M4TV21



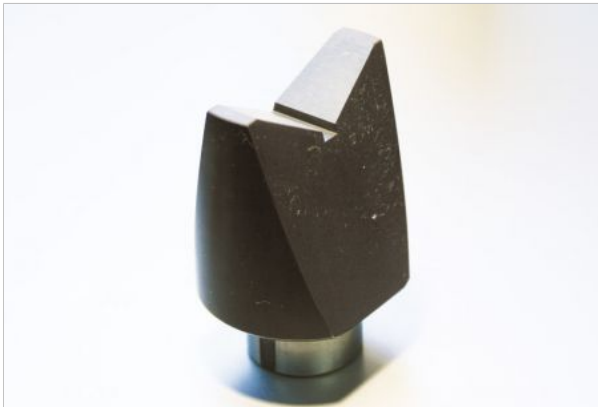
V-Anvil set one-sided
supporting width 10 mm
for work pieces \varnothing 4 - 10 mm

V-Anvil M4TV22



V-Anvil
supporting width 12 mm
for work pieces \varnothing 8 - 20 mm

V-Anvil M4TV23



V-Anvil
supporting width 14 mm
for work pieces \varnothing 15 - 55 mm

Vickers NDV28007Z

Vickers penetrator
with MPA - certificate
length: 28 mm
Ø 6.5 mm
(for \geq HV 5)

Vickers NDV28004Z

Vickers penetrator
with MPA - certificate
length: 28 mm
Ø 3.8 mm
(for \geq HV 5)

Vickers NDV14010Z

Vickers penetrator
with MPA - certificate
length: 14 mm
Ø 8 mm
(for nose cone N1PK01)

Brinell NKW28E02Z



Ball holder
with MPA - certificate
2.5 mm ball pressed-in
length: 28 mm
Ø 6.5 mm

Brinell NKW28E05Z



Ball holder
with MPA - certificate
5 mm ball pressed-in
length: 28 mm
Ø 6.5 mm

Brinell NKW28A02Z



Ball holder
with MPA - certificate
2,5 mm ball exchangeable
length: 28 mm
Ø 7 mm

Brinell NKW28A05Z



Ball holder
with MPA - certificate
5 mm ball exchangeable
length: 28 mm
Ø 10,5 mm

Rockwell NDR28007Z



Rockwell penetrator
with MPA - certificate
Length: 28 mm
Ø 6.5 mm

Rockwell NDR28004Z



Rockwell penetrator
with MPA - certificate
Length: 28 mm
Ø 3.8 mm

Rockwell NKW28E16Z



Ball holder
with MPA - certificate
1/16" mm ball pressed-in
length: 28 mm
Ø 6.5 mm

Rockwell NDR14010Z



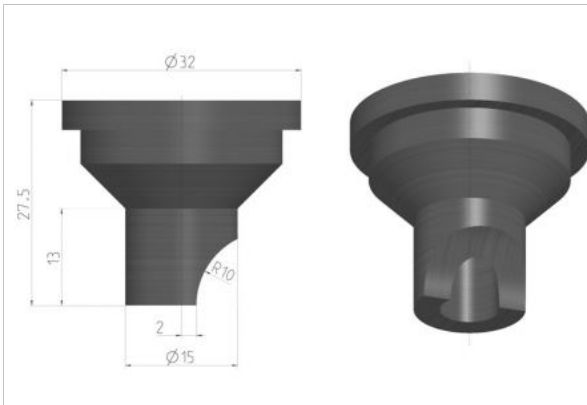
Rockwell penetrator
with MPA - certificate
Length: 14 mm
Ø 8 mm

Nose cone N1PK01



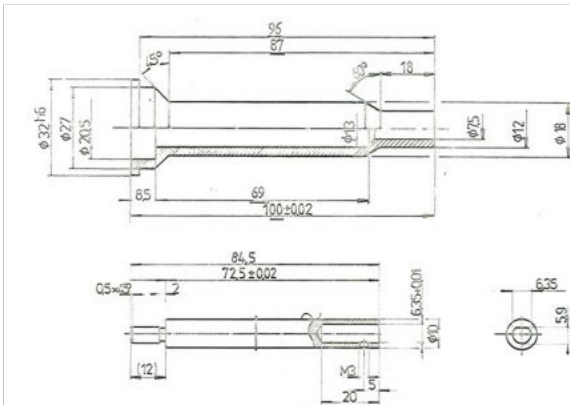
Nose cone
 support dia. 19.5 mm
 drilling: 12 mm
 length: 13.5 mm

Nose cone standard N1PK07



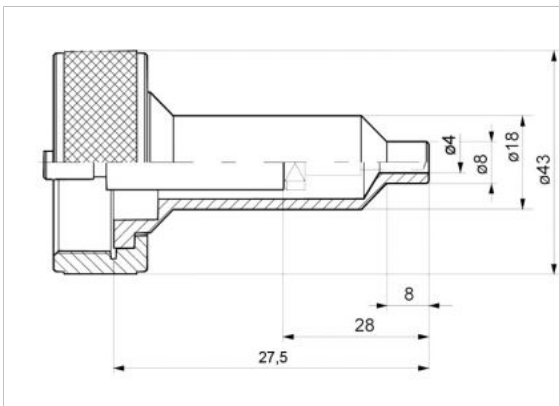
Nose cone standard
 support dia. 15 mm
 drilling: 8 mm
 length: 27.5 mm

Nose cone N1PK09



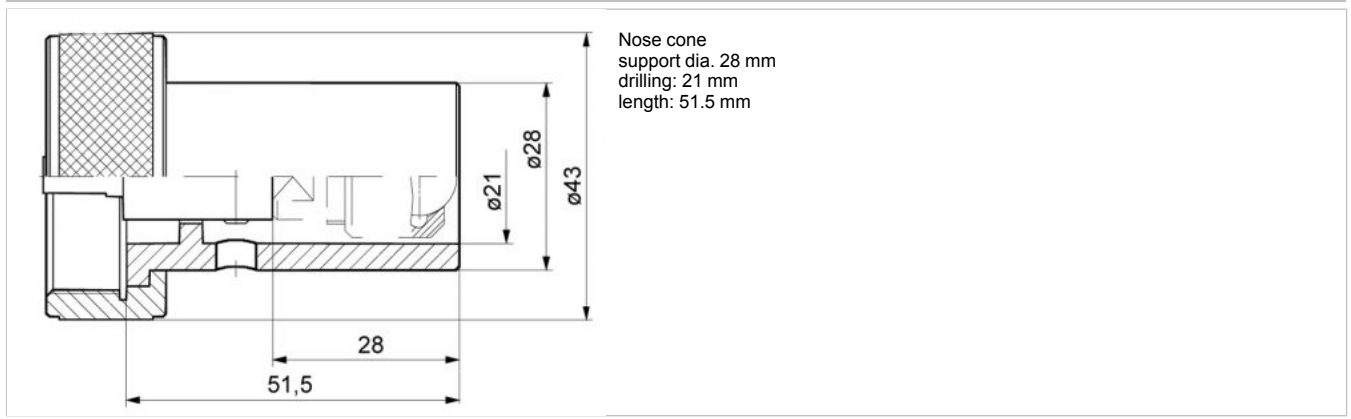
Nose cone
 support dia. 12 mm
 drilling: 7 mm
 length: 100 mm
 inclusive penetrator elongation

Nose cone N1PK10



Nose cone
 support dia. 8 mm
 drilling: 5 mm
 length: 27.5 mm

Nose cone N1PK17



Test block Brinell NB062100Z



Test block HB 2.5/62.5
Hardness value approx. 100
with MPA certificate

Test block Brinell NB062150Z



Test block HB 2.5/62.5
Hardness value approx. 150
with MPA certificate

Test block Brinell NB062200Z



Test block HB 2.5/62.5
Hardness value approx. 200
with MPA certificate

Test block Brinell NB187100Z



Test block HB 2.5/187.5
Hardness value approx. 100
with MPA certificate

Test block Brinell NB187150Z



Test block HB 2.5/187.5
Hardness value approx. 150
with MPA certificate

Test block Brinell NB187200Z



Test block HB 2.5/187.5
Hardness value approx. 200
with MPA certificate

Test block Brinell NB187250Z



Test block HB 2.5/187.5
Hardness value approx. 250
with MPA certificate

Test block Brinell NB187300Z



Test block HB 2.5/187.5
Hardness value approx. 300
with MPA certificate



Test block HB 2.5/187.5
Hardness value approx. 400
with MPA certificate

Test block Rockwell NRA00070Z



Test block HRA
with MPA certificate,
hardness value approx. 70

Test block Rockwell NRB00100Z



Test block HRB
with MPA certificate,
hardness value approx. 100

Test block Rockwell NRC00045Z



Test block HRC
with MPA certificate,
hardness value approx. 45

Test block Rockwell NRC00055Z



Test block HRC
with MPA certificate,
hardness value approx. 55

Test block Rockwell

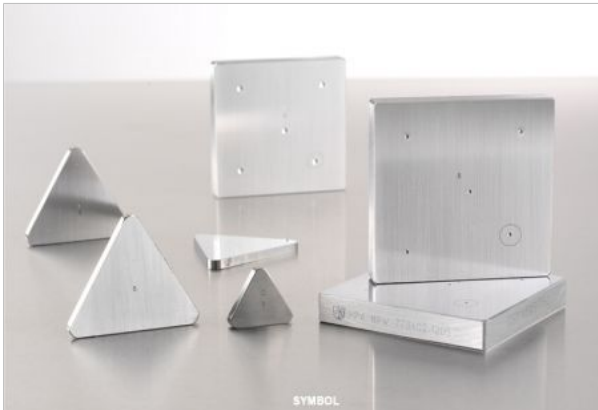
NRC00060Z



Test block HRC
with MPA certificate,
hardness value approx. 60

Test block Rockwell

NRC00065Z



Test block HRC
with MPA certificate,
hardness value approx. 65

Test unit for spring sleeves N2 N1A001

Test unit for N3/N4 in connection with N2 spring sleeves with loads 15 - 187.5 kgf selectable
Rockwell, Brinell- and Vickers test method (depth difference measurement)

inclusive standard nose cone N1P K07
without Dial gauge NMU000

Spring sleeve N2H001

for test unit N1A 001
test load 147 N (15 kgf)

Spring sleeve N2C001

for test unit N1A 001
test load 294 N (30 kgf)

Spring sleeve N2G001

for test unit N1A 001
test load 306.5 N (31.25 kgf)

Spring sleeve N2L001



for test unit N1A 001
test load 441.5 N (45 kgf)

Spring sleeve N2E001



for test unit N1A 001
test load 588.6 N (60 kgf)

Spring sleeve N2B001



for test unit N1A 001
test load 613 N (62.5 kgf)

Spring sleeve N2F001



for test unit N1A 001
test load 981 N (100 kgf)

Spring sleeve N2A001



for test unit N1A 001
test load 1471.5 N (150 kgf)

Spring sleeve N2D001



for test unit N1A 001
test load 1839.4 N (187.5 kgf)

Adjustable test unit N1S000



SYMBOL

for Rockwell testing HRN and HRT (DIN EN ISO 6508)
test loads 147 / 294 / 441.5 N (15 / 30 / 45 kgf)
incl. standard nose cone N1PK07
(reduction of test height by 55 mm)

Adjustable test unit N1R000



SYMBOL

for Rockwell testing (DIN EN ISO 2039-1)
test loads 588.6 / 981 / 1471.5 N (60 / 100 / 150 kgf)
incl. standard nose cone N1PK07
(reduction of test height by 55 mm)

Adjustable test unit N1U000



SYMBOL

for HVT 30 / HRC / HBT 2.5/187.5
test loads 294 / 1471.5 / 1839.4 N (30 / 150 / 187.5 kgf)
incl. nose cone N1PK07
(reduction of test height by 55 mm)
only for N3D hardness tester

Attention:
HVT 30 evaluation for Vickers DIN EN ISO 6507 only with microscope

Adjustable test unit N1P000



SYMBOL

for plastics (DIN EN ISO 2039-1)
test loads 49 / 132.4 / 358 / 961.4 N (5 / 13.5 / 36.5 / 98 kgf)
incl. standard nose cone N1PK07
(reduction of test height by 55 mm)

Dial gauge standard **NMU000**



for N1 test units

Dial gauge 1/100 **NMP000**



for N1P test units

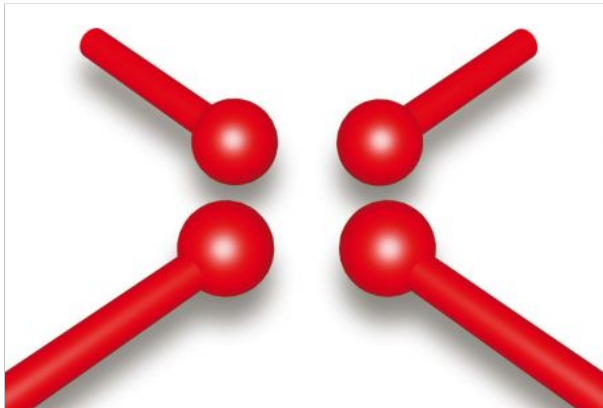


Spindle-bellow
(reducing of test height: 0 - 245 mm)

Data cable M4Z545



Data cable hardness tester RS232 - PC, serial, 9 pol.



ecos BASIS / Q-DAS® Ready
Basis software for products N3D/M1/M2/M4/M5/V4C/V5CVR5C
and ET-processor, inclusive report generator, data cable and software dongle